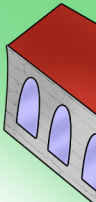


Amerton Railway

Official Board Game





START

FINISH

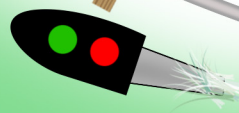
ENGINE SHED

SIG

BRIDGE 1

SIGNAL

DIGG



SID THE SNAKE

THE BROOK

THE WINDMILL



CHARTLEY HALT

PICNIC AREA





Amerton Railway

Official Board Game

Drive your steam train around the railway at Amerton, looking out for landmarks around the railway. Will you get all the way round without the fire going out? Will you drop the shovel? Maybe you will get it all just right and be extra speedy!

Find out more about the railway at www.amertonrailway.co.uk

Preparation

- Print out the board and the Cards
- Stick the two halves of the board together and cut out the game cards and give them a good shuffle
- Place the game cards next to the board, find player counters (maybe you could make your own engines?) and 1 dice (or use an online version like random.org/dice)

The Rules

- Starting with the youngest player take it in turns to roll the dice and move forward that number of spaces.
- If you land on a landmark space (something written on it, except start/finish) pick up a card and do as it says. This is the then the end of your turn.
- First to the finish wins!

Created by: P Gully, E Gully, H Gully & T Eivers.

Game Cards

<p>You have the water level just right! Move forward 2 spaces</p>	<p>Oh no! Your water is too low. Go back 2 spaces</p>
<p>That fire is lovely, and pressure great! Move Forward 2 spaces</p>	<p>The fire went out! You need to stop and re-light it :(Miss a turn</p>
<p>You dropped off some goods. Your train is lighter and quicker Move forward 1 space</p>	<p>SHEEP! Sheep are on the track blocking your way Go back 1 space</p>
<p>You are driving very smoothly, the passengers are happy. Move forward 1 space</p>	<p>You dropped the shovel, you need to go back and get it. Go Back 2 Spaces</p>
<p>You found a bag of coal! Roll Again</p>	<p>Too much pressure in the boiler, the safety valves have lifted! Go Back 1 space</p>
<p>The signal is green, keep going! Roll Again</p>	<p>You stopped too quickly, a passenger fell off their seat! Go Back 2 spaces</p>
<p>Right Away! Green flag from the guard. Move Forward 1 space</p>	<p>A Tree has fallen across the track, you need to clear the way! Go Back 1 space</p>
<p>You're right on time! Move forward 2 spaces</p>	<p>The signal is red, you need to wait here. Miss a turn</p>
<p>Driving it like you stole it - The enthusiasts are happy! Move forward 1 space</p>	<p>Your whistling has annoyed the farmer. Move back 1 space</p>